



Happy
Birthday
• Variation
• Project

Happy Birthday Variation Project

The theme we will be making variations for is Happy Birthday. You can do anything you want to this tune, as long as it is somewhat recognizable.

Start with either the melody or the bass, don't try to do both at the same time!

Melody Variations:

Some of the many things that you might want to do musically include:

- Change the rhythm
- Change the modality (major vs. minor)
- Add notes to the melody (scales, neighboring tones, embellishments)
- Change the location of the melody
- Change the tempo
- Change the metre (2:4, 3:4 etc.)
- Add little interruptions (if it fits the mood)
- Add staccato notes
- Add dynamics
- There are many, many more things you can do! These are just suggestions!

Bass Variations:

Some of the many things that you might want to do musically include:

- Chords



- Open fifths



- Broken chords



- Jump bass



- Alberti bass



- Waltz pattern



- Take a look at some of your pieces, what does the left hand do?

On the next pages are the melody and some blank staff paper. Make notes about your ideas either on top of the melody, or on the blank paper, or any way you like!

Happy Birthday Variation Project

First variation of the 'Happy Birthday' melody. The music is written in 3/4 time on a grand staff. The melody in the treble clef consists of a quarter note G4, a quarter note A4, a quarter note B4, a quarter note C5, a quarter note B4, a quarter note A4, and a quarter note G4. The bass clef is empty.

Second variation of the 'Happy Birthday' melody, marked with a '3' above the staff. The melody in the treble clef consists of a quarter note G4, a quarter note A4, a quarter note B4, a quarter note C5, a quarter note B4, a quarter note A4, and a quarter note G4. The bass clef is empty.

Third variation of the 'Happy Birthday' melody, marked with a '5' above the staff. The melody in the treble clef consists of a quarter note G4, a quarter note A4, a quarter note B4, a quarter note C5, a quarter note B4, a quarter note A4, and a quarter note G4. The bass clef is empty.

Fourth variation of the 'Happy Birthday' melody, marked with a '7' above the staff. The melody in the treble clef consists of a quarter note G4, a quarter note A4, a quarter note B4, a quarter note C5, a quarter note B4, a quarter note A4, and a quarter note G4. The bass clef is empty. The piece ends with a double bar line.

Happy Birthday Variation Project

Musical notation for the first variation of 'Happy Birthday'. The piece is in 3/4 time. The first staff (treble clef) contains a melody of quarter notes: C4, D4, E4, F4, G4, A4, B4, C5. The second staff (bass clef) is empty.

3

Musical notation for the second variation of 'Happy Birthday'. The piece is in 3/4 time. The first staff (treble clef) contains a melody of quarter notes: C4, D4, E4, F4, G4, A4, B4, C5. The second staff (bass clef) is empty.

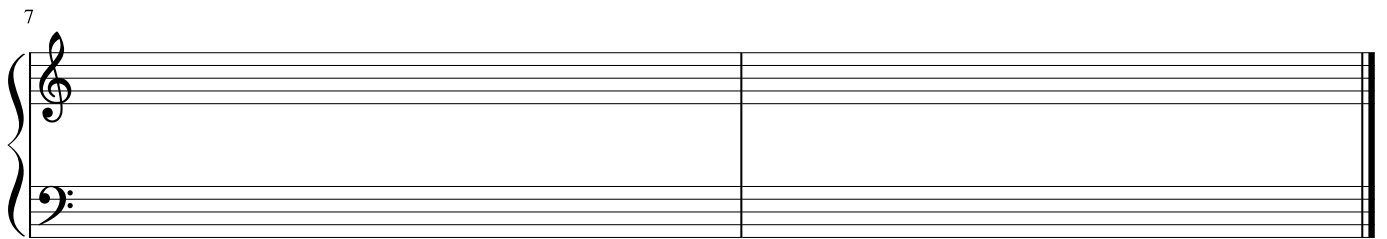
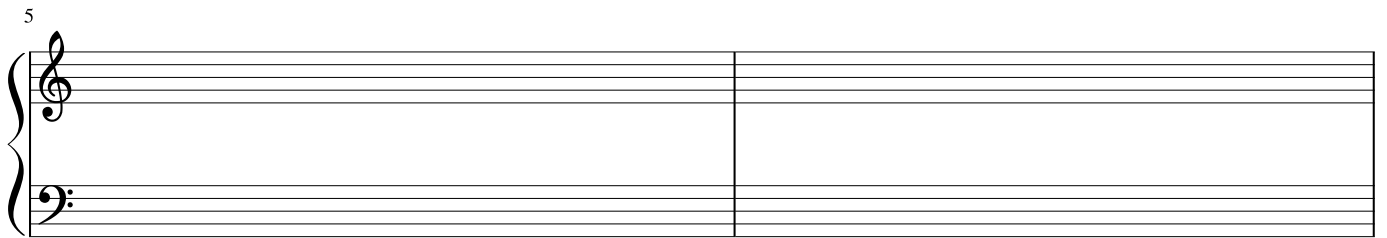
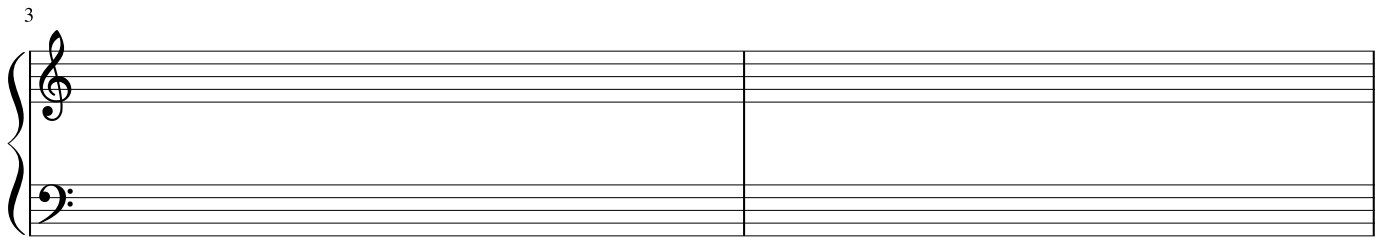
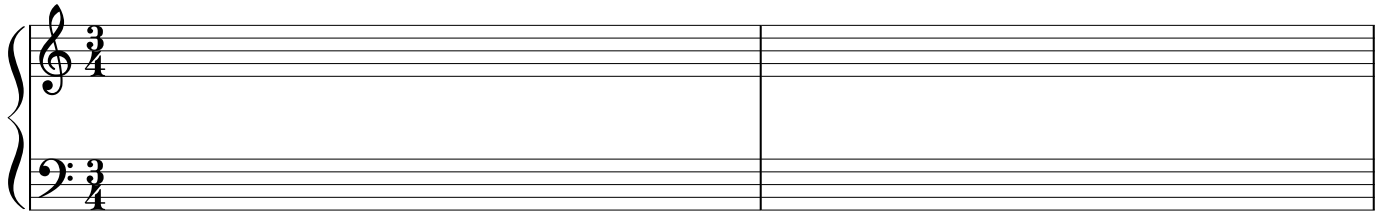
5

Musical notation for the third variation of 'Happy Birthday'. The piece is in 3/4 time. The first staff (treble clef) contains a melody of quarter notes: C4, D4, E4, F4, G4, A4, B4, C5. The second staff (bass clef) is empty.

7

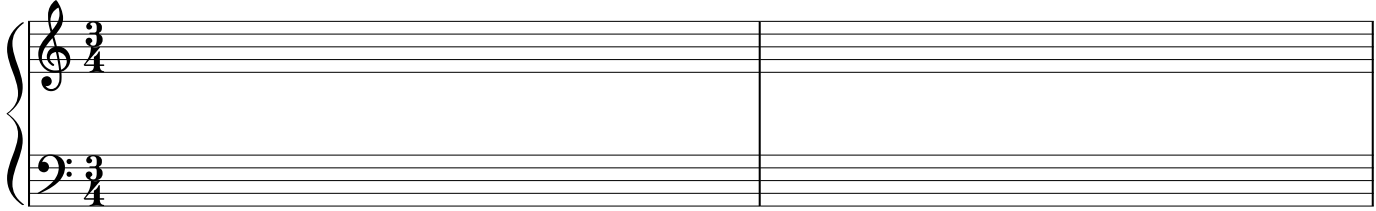
Musical notation for the fourth variation of 'Happy Birthday'. The piece is in 3/4 time. The first staff (treble clef) contains a melody of quarter notes: C4, D4, E4, F4, G4, A4, B4, C5. The second staff (bass clef) is empty. The piece ends with a double bar line.

Happy Birthday Variation Project

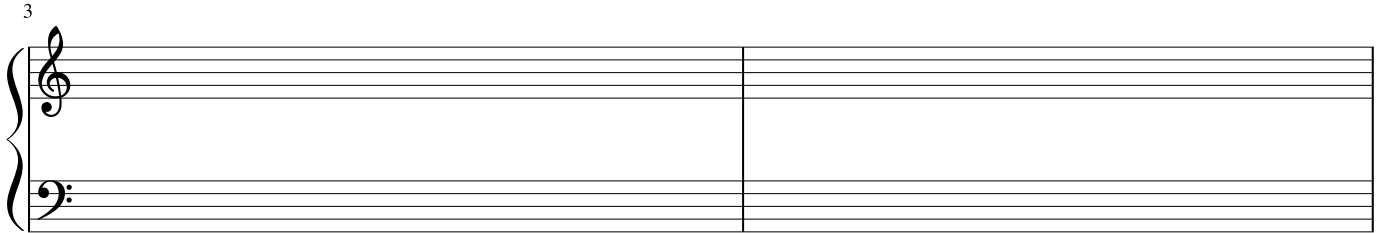


Final Arrangement

Birthday



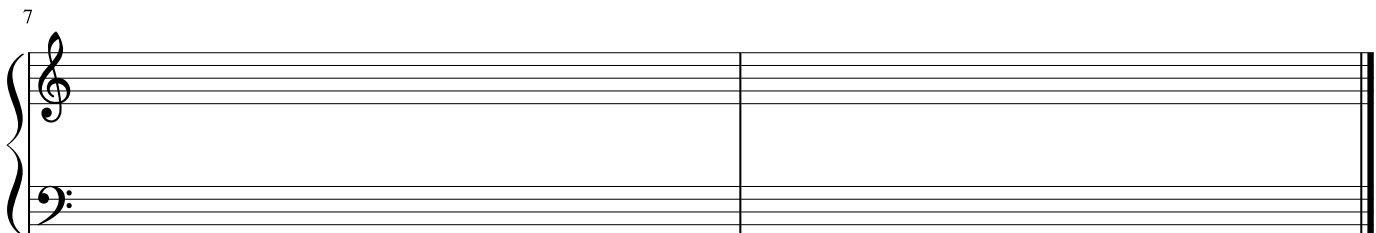
Musical staff system 1, consisting of a grand staff with treble and bass clefs. The time signature is 3/4. The staff is empty, with a vertical bar line at the end of the first measure.



Musical staff system 2, consisting of a grand staff with treble and bass clefs. The time signature is 3/4. A measure rest '3' is positioned above the treble clef. The staff is empty, with a vertical bar line at the end of the first measure.



Musical staff system 3, consisting of a grand staff with treble and bass clefs. The time signature is 3/4. A measure rest '5' is positioned above the treble clef. The staff is empty, with a vertical bar line at the end of the first measure.



Musical staff system 4, consisting of a grand staff with treble and bass clefs. The time signature is 3/4. A measure rest '7' is positioned above the treble clef. The staff is empty, with a vertical bar line at the end of the first measure.