



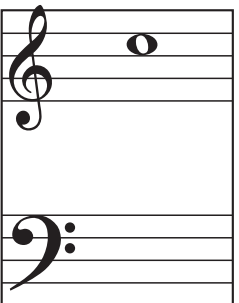
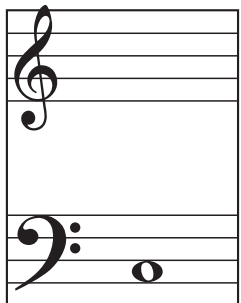
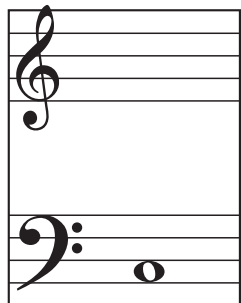
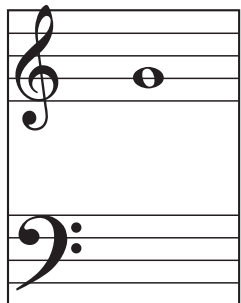
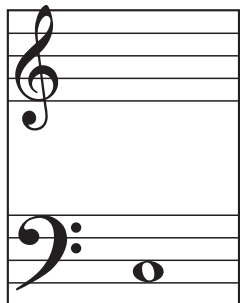
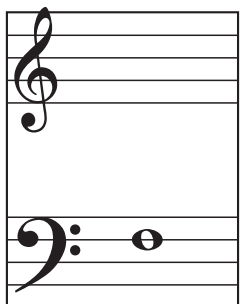
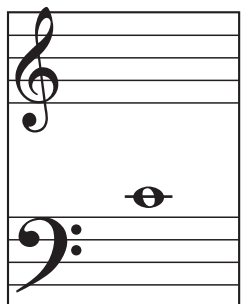
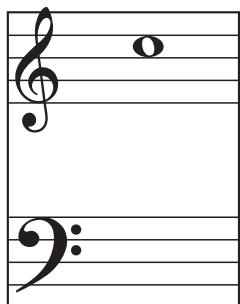
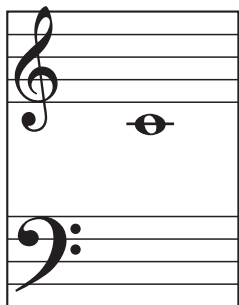
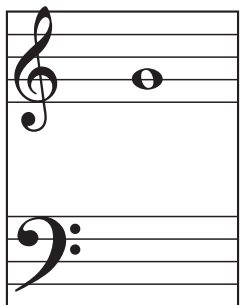
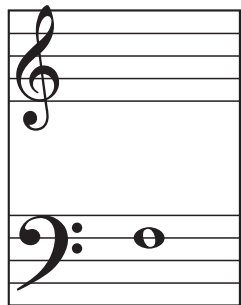
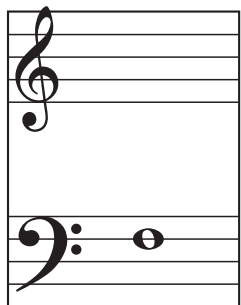
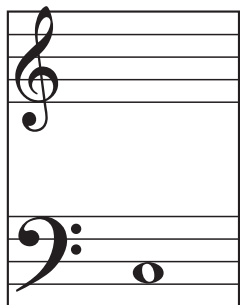
Landmark X's and O's

Landmark X's and O's Directions

- This is a two-player game.
- Choose 1 card to play with and place it between the two players.
- The players take turns to draw a card and place a token on the correct note (only 1 at a time, even if there are two possible notes).
- The first to get 3 in a row is the winner.

Landmark X's and O's

Landmark X's and O's



Middle C	Bass C	Treble C	Bass F	Treble G	Middle C
Middle C	Bass C	Treble C	Bass F	Treble G	Treble G
Middle C	Bass C	Treble C	Bass F	Treble G	Bass F
Middle C	Bass C	Treble C	Bass F	Treble G	Treble C

Middle C	Bass C	Treble C	Bass F	Treble G	Middle C
Middle C	Bass C	Treble C	Bass F	Treble G	Bass C
Middle C	Bass C	Treble C	Bass F	Treble G	Bass C
Middle C	Bass C	Treble C	Bass F	Treble G	Treble C

Middle C	Bass C	Treble C	Bass F	Treble G	Middle C
Middle C	Bass C	Treble C	Bass F	Treble G	Bass C
Middle C	Bass C	Treble C	Bass F	Treble G	Bass C
Middle C	Bass C	Treble C	Bass F	Treble G	Treble C